



Spa and Bedroom Extension Slieve Donard Hotel Newcastle Co Down

Demolition of existing spa, design and construction of a five-storey extension (5,000m²), encompassing a new ESPA spa (gymnasium, swimming pools, treatment and relaxation rooms, lounge and changing facilities) on the ground and first floors with 4 suites and 58 bedrooms on the other floors.

Client	Hastings Hotels Group Ltd
Architect	Design for GRAHAM by: Robinson Patterson Partnership Building Design Partnership Stothers M&E Ltd
Value	£15,000,000
Contract Period	70 weeks



Spa - Entrance



Spa - Reception



Spa - Reception



Lighthouse Lounge



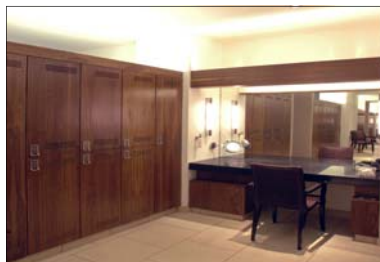
Suite - Lounge/bedroom



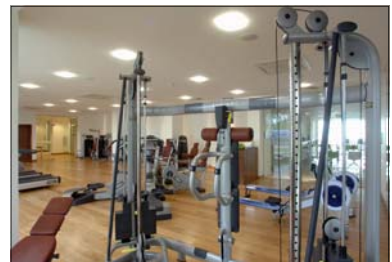
Suite - Bathroom



Spa - Juice Bar



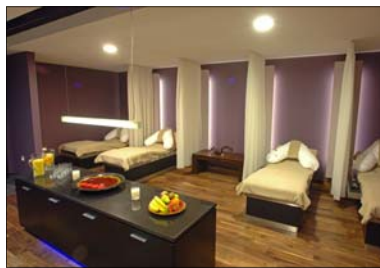
Spa - Changing Room



Spa - Gymnasium



Spa - Cosmetics Bar



Spa - Relaxation Room



Spa - Finishing Touches Studio



Spa - Rock Sauna



Spa - Amethyst Steam Room



Spa - Vitality Pool